

Lé Lagune



# SANDAL MAURITIUS PVT. LTD

Sandal Mauritius Pvt. Ltd the company behind Le Lagune is promoted by Assotech Realty Pvt. Ltd New Delhi, India ([www.assotech.in](http://www.assotech.in)).

Assotech Realty was established in the year 2002. Since then it has continued to make confident strides towards a leadership position in New Delhi region real estate scenario and is admired for its Quality, Innovativeness and commitment to its end users.

Assotech Realty has built growth and reputation through consistent designs and quality parameters that has made a significant difference to their products.

We have developed many projects across New Delhi region at strategic locations comprising of high end Residential Projects, Grade A level Office Spaces, Serviced Apartments, High Street Retail etc.

Our Residential Projects reflect life in each brick whereas our Commercial Projects reflect superior Quality and Class.

With Quality Construction and smooth project execution Assotech Realty has become one of the most trusted brands with thousands of satisfied customers.

At Assotech Realty we are committed to deliver world class projects by achieving International Quality Standards through cutting edge value engineering and optimum resource management. Our professional approach helps us meeting the special demands of our discerning Clients providing them with the best of options in today's markets.

## OUR VALUES



CREATIVITY



EFFICIENCY



SUSTAINABILITY



ASTHETICS



LE LAGUNE  
PREMIUM LUXURY CONDOMINIUMS

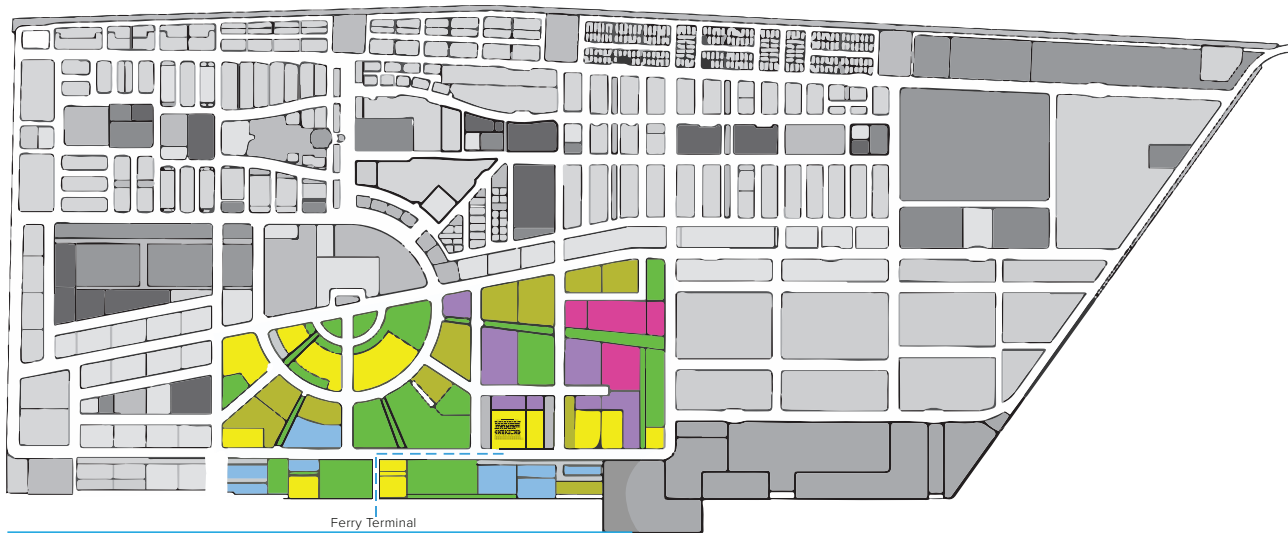


## PREMIUM LOCATION, LUXURY AND CONVENIENCE

Le Lagune is a Residential Project by Sandal Mauritius Pvt. Ltd having Two bedrooms, Three bedrooms and Penthouses in one of the finest locations on Ocean front road at Hulhumale. The complex Le Lagune has been designed by Alva Architects, New Delhi and Gedor Consulting Maldives.

This project, an oasis in Hulhumale is unique in many aspects. It comprises of air conditioned apartments which have been planned to suit contemporary lifestyle. It has ventilated rooms, modern Club House with Gym, Kidz Room, Infinity Edge Pool and a High Street Retail within the complex.





## HULHUMALE MALDIVES

Hulhumale is a premium Island development with modern master plan located in the south of North Male, Maldives. The island was reclaimed to establish a new land mass required to meet the existing and future housing, Industrial and Commercial development demands of Male region. Hulhumale envisions the establishment of higher standards in the Quality of living in Maldives.

At present it is a blend of Residential, Commercial and industrial component acting as a catalyst to entice broad-based investment in the field of Commerce, Education, Health, Recreation, Tourism etc.

## THE ISLAND IS WELL DEVELOPED WITH

- Modern public infrastructure
- Primary and secondary schools
- Hospitals
- Central city Park with open air gymnasium
- Public buildings for Government and social requirements



## WELCOME TO THE WORLD OF LE LAGUNE

Located at the most prominent location of Hulhumale, Le Lagune is a signature waterfront Development by Sandal Mauritius. It is a perfect blend of Comfort, Convenience and Luxury, just over 100 meters walk from the ferry junction and right next to the central city park.

The project offers a breath-taking panoramic view of Indian Ocean and invites you to live life on your own terms, your own way, in your own world. The project has been developed keeping the people of Maldives and their needs in mind blending thoughtful aesthetics with contemporary design and spacious interiors.



## KEY HIGHLIGHTS

- Air conditioned units
- Wardrobes and Modular kitchen with each unit
- High-end fixtures and fittings
- Tower with high speed elevators
- Gated community, secured with single point entry/exit control

- Security with CCTV camera and access control
- Lounge area with infinity pool on the terrace
- Modern gymnasium and health club
- Kidz Room
- Two and four-wheelers parking



## LUXURY IS WHERE STYLE MEETS SUBSTANCE

Bedrooms are more than relaxing home areas, they are sanctuaries and a place where we're spending as much as one third of our entire lives. We aim to provide a modern luxury bedroom in a size to help you with a relaxing hub for your family.





THE FONDEST MEMORIES ARE MADE  
WHEN EVERYONE GATHERS AROUND  
THE TABLE

Your dining room is a truly multi-functional space. It is where we eat, entertain and sometimes even work. When designing your dining room we have thought carefully about how you use the space and what you really want to achieve with the area.

Whatever your style, room size or budget, we have the dining area designed for you.



## PARKING & SECURITY

At Le Lagune we have installed the latest Parking and Security system round the clock.  
We have ensured it's not just your home but it's also your safe haven.





## COMMERCIAL SPACE

Aesthetically designed double height commercial spaces located on the ground floor which meet all your day to day needs. All residents will have easy access to retail area.



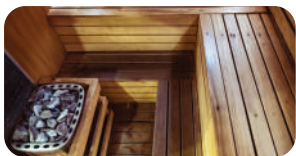
CLUB LOUNGE



GYMNASIUM



SWIMMING POOL



HEALTH CLUB



KIDZ ROOM



## LE LAGUNE ROOFTOP CLUB



SELECT  
YOUR APARTMENT

2 BEDROOM

A



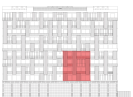
CITY VIEW

TOTAL FLOOR AREA	994.16 SQFT
BEDROOMS	02
TOILET	02
MAID ROOM	01
BALCONY	YES
UTILITY	YES
KITCHEN	YES
LIVING & DINING	YES



2 BEDROOM UNIT - TYPE A

B



CITY VIEW

TOTAL FLOOR AREA	1069.51 SQFT
BEDROOMS	02
TOILET	02
MAID ROOM	01
BALCONY	YES
UTILITY	YES
KITCHEN	YES
LIVING & DINING	YES



2 BEDROOM UNIT - TYPE B

C



CITY VIEW

TOTAL FLOOR AREA	1103.31 SQFT
BEDROOMS	02
TOILET	02
MAID ROOM	01
BALCONY	YES
UTILITY	YES
KITCHEN	YES
LIVING & DINING	YES



2 BEDROOM UNIT - TYPE C

D



CITY VIEW

TOTAL FLOOR AREA	994.16 SQFT
BEDROOMS	02
TOILET	02
MAID ROOM	01
BALCONY	YES
UTILITY	YES
KITCHEN	YES
LIVING & DINING	YES



2 BEDROOM UNIT - TYPE D

SELECT  
YOUR APARTMENT

3 BEDROOM



A



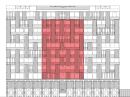
SEA VIEW

TOTAL FLOOR AREA	1337.64 SQFT
BEDROOMS	03
TOILET	03
MAID ROOM	01
BALCONY	YES
UTILITY	YES
KITCHEN	YES
LIVING & DINING	YES



3 BEDROOM UNIT - TYPE A

B



SEA VIEW

TOTAL FLOOR AREA	1534.95 SQFT
BEDROOMS	03
TOILET	03
MAID ROOM	01
STUDY ROOM	01
BALCONY	YES
UTILITY	YES
KITCHEN	YES
LIVING & DINING	YES



3 BEDROOM UNIT - TYPE B

C



SEA VIEW

TOTAL FLOOR AREA	1337.64 SQFT
BEDROOMS	03
TOILET	03
MAID ROOM	01
BALCONY	YES
UTILITY	YES
KITCHEN	YES
LIVING & DINING	YES



3 BEDROOM UNIT - TYPE C

D



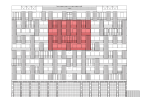
CITY VIEW

TOTAL FLOOR AREA	1337.64 SQFT
BEDROOMS	03
TOILET	03
MAID ROOM	01
BALCONY	YES
UTILITY	YES
KITCHEN	YES
LIVING & DINING	YES



3 BEDROOM UNIT - TYPE D

E



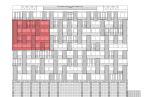
CITY VIEW

TOTAL FLOOR AREA	1539.04 SQFT
BEDROOMS	03
TOILET	03
MAID ROOM	01
STUDY ROOM	01
BALCONY	YES
UTILITY	YES
KITCHEN	YES
LIVING & DINING	YES



3 BEDROOM UNIT - TYPE E

F



CITY VIEW

TOTAL FLOOR AREA	1337.64 SQFT
BEDROOMS	03
TOILET	03
MAID ROOM	01
BALCONY	YES
UTILITY	YES
KITCHEN	YES
LIVING & DINING	YES



3 BEDROOM UNIT - TYPE F

## SELECT YOUR PENTHOUSE

Penthouse is the crown Jewel of Le Lagune Condominiums.  
It is your personal style statement of a customized space of luxury and lifestyle.



A



SEA VIEW

TOTAL FLOOR AREA	3193.68 SQFT
BEDROOMS	04
TOILET	04
DRESSING ROOM	01
POWDER ROOM	01
STUDY ROOM	01
FAMILY LOUNGE / DINING AREA	YES
KITCHEN	YES
STORE ROOM/UTILITY	02
MAID ROOM	01
PRIVATE TERRACE	YES (2 SIDE)



PENTHOUSE - TYPE A

B



SEA VIEW

TOTAL FLOOR AREA	2917.04 SQFT
BEDROOMS	04
TOILET	04
DRESSING ROOM	02
POWDER ROOM	01
STUDY ROOM	01
FAMILY LOUNGE / DINING AREA	YES
KITCHEN	YES
STORE ROOM/UTILITY	02
MAID ROOM	01
PRIVATE TERRACE	YES (2 SIDE)



PENTHOUSE - TYPE B

LE LAGUNE  
BY  
SANDAL MAURITIUS PVT. LTD  
(A GROUP COMPANY OF ASSOTECH REALTY PVT. LTD.)  
Plot No. D6-IC  
Fithuroanu Magu  
Hulhumale, Maldives  
Phone: +9607376044  
Email : [info@assotech.mv](mailto:info@assotech.mv)  
Website: [www.assotech.mv](http://www.assotech.mv)

# PARTNERS

CONCEPT ARCHITECT

ALVA

NEW DELHI, INDIA

PROJECT ARCHITECT



MALDIVES

PROJECT CONTRACTORS



MALDIVES



# DELIVERED PROJECTS OF ASSOTECH REALTY IN NEW DELHI REGION

## RESIDENTIAL

### **WINDSOR PARK**

High rise group housing project

### **WINDSOR GREENS**

High rise group housing project

### **SPRING FIELDS**

High rise group housing project

## COMMERCIAL PROJECT

### **ASSOTECH BUSINESS CRESTERRA**

A Grade office spaces

### **TRADEX TOWER I & II**

A Grade office spaces

## HOSPITALITY

### **SANDAL SUITES**

Premium Serviced Suites

## RETAIL

### **SANDAL STREET**

### **WINDSOR STREET**

## DISCLAIMER

Sandal Mauritius Pvt Ltd makes no representation or warranty of any kind, express implied or statutory, regarding the material and information contained in the document and are subject to change without notice and are provided for general information only. The plans, layout, information, specifications, images and facilities shown in the document are merely indicative in nature (not legal offer and thus cannot form part of an offer or contract presentation) and are subject to variations and modifications at the sole discretion of the company or the competent authority which approves the building plans.



[www.assotech.mv](http://www.assotech.mv)